

**Agenda**  
**Jefferson County Land & Water Conservation Committee (LWCC)**  
***"Working Together To Protect & Enhance The Environment"***  
**Jefferson County Courthouse**  
**320 S Main St - Room 112**  
**Jefferson, WI 53549**  
**Wednesday, August 21, 2013**  
**8:30 A.M.**

Committee Members: Sarah Bregant, Walt Christensen, Matthew Foelker, Carlton Zentner, Scott Zimmerman

1. Call to Order
2. Roll Call (Establish a Quorum)
3. Certification of Compliance with the Open Meetings Law
4. Review of the Agenda
5. Review and Approval of the July 17, 2013 Meeting Minutes
6. Communications
7. Citizen Comments
8. BR Amon Non-Metallic Mining Reclamation Update - Gerry Kokkonen (LWCD)
9. Natural Resources Conservation Service Report (NRCS) - Dennis Vollmer
10. Notice of Noncompliance - Farmland Preservation Program (FPP)
11. Cancellation of Noncompliance - Farmland Preservation Program (FPP)
12. Transitional Planning for Retiring Employees
13. Town & Country Discussion - Walt Christensen
14. 2013/2014 Tree Sale - Mark Watkins (LWCD)
15. Monthly Financial Report
16. Set Next Meeting and Possible Agenda Items
17. Adjournment

Note: If committee members are not able to attend please notify the LWCD

The committee may discuss and/or take action on any item specifically listed on the agenda. Individuals requiring special accommodations for attendance at the meeting should contact the County Administrator at 920-674-7101 24 hours prior to the meeting so appropriate arrangements can be made.

**Land & Water Conservation Committee  
Minutes  
August 21, 2013**

**1. Call to Order:**

The monthly meeting was called to order by Walt Christensen at 8:30 a.m. Committee members Walt Christensen, Matthew Foelker, Carlton Zentner, and Scott Zimmerman (@ 8:32) were present. Also in attendance were Mark Watkins, Director, Land & Water Conservation Department (LWCD); Kim Liakopoulos, LWCD; Gerry Kokkonen, LWCD; Ben Wehmeier, County Administrator; John Molinaro, County Board Chairman/Supervisor; and Dennis Vollmer, NRCS. Committee member Sarah Bregant was absent.

**2. Roll Call (Establish a Quorum):**

A quorum was established.

**3. Certification of Compliance with the Open Meetings Law:**

It was determined that the committee was in compliance with the Open Meetings Law.

**4. Review of the August Agenda:**

The August agenda was reviewed by the committee members. Walt Christensen requested that item # 13 be moved up in the agenda because of a visiting speaker. Item # 13 has been moved to # 8.

**5. Review and Approval of the June Meeting Minutes:**

Matt Foelker made a motion to approve the July meeting minutes as written, Carlton Zentner seconded. Motion carried 4/0.

**6. Communications:**

There were no communications at this time.

**7. Citizen Comments:**

There were no citizen comments.

**8. Town & Country Discussion - Erlene Ronk, Vice Chair of Town & Country**

See attached.

**9. BR Amon Non-Metallic Mining Reclamation Update - Gerry Kokkonen (LWCD)**

60 day notice sent to Lake Mills Blacktop c/o Hometown Bank in Fond du Lac. See attached paperwork for additional information on the BR Amon Reclamation status.

**10. Natural Resources Conservation Service (NRCS) Report:**

Dennis Vollmer discussed the Natural Resources Conservation Service (NRCS) report. See attached. Due to budget short falls, Jody's (NRCS assistant) hours will be reduced. She will be in Jefferson County 2 days a week and the other 3 will be in Rock County. Dennis mentioned that Brian Risky would be leaving Jefferson County NRCS September 20, 2013 for a position in Altoona.

**11. Notice of Noncompliance with Soil and Water Conservation Requirements - Farmland Preservation Program (FPP):**

Timothy Marsden, Dale & Nancy Zastrow. Carlton Zentner made a motion to accept the notices, Matt Foelker seconded. Motion carried, 4/0.

**12. Cancellation of Noncompliance - Farmland Preservation Program (FPP):**

Bernard Partoll, Curtis & Mary Pernat, Robert & Laurel Selberg. Matt Foelker made a motion to accept the cancellations, Scott Zimmerman seconded. Motion carried, 4/0.

**13. Transitional Planning for Retiring Employees:**

Ben Wehmeier, County Administrator, informed the committee after the 2014 budget season has completed, he will meet with the department heads to discuss a plan of action. The department heads, the administration department and Ben Wehmeier will work together to make this happen.

**14. 2013/2014 Tree Sale - Mark Watkins (LWCD)**

See attached form. Our cost from the nursery has increased slightly and in turn our sale price has increased. Carlton Zentner showed some concern as to whether or not this was a cost effective program. Mark Watkins indicated that even with the increases, it is cost effective and the sale is well-received within the members of the County.

**15. Monthly Land & Water Conservation Department (LWCD) Financial Report: Mark Watkins**

See attached. One item not listed on this report is the staffing grant money we recently received. We are on track with our current budget and see no indication that it will change.

**16. Set next meeting and possible agenda items:**

Revisit items 10, 11, 15. The County Farm lease will expire in September. Carlton Zentner would like the status of the farmland on the new Highway Shop site to be reintroduced to the agenda as a reoccurring item. John Molinaro would like to discuss grant opportunities for the wetland on that site also. Scott Zimmerman indicated that we should discuss using the "four corners" of the highway site as a "best display" of our county mission so we can show the taxpayers and other counties what we do.

**17. Adjournment:**

Motion to adjourn was made by Scott Zimmerman and seconded by Matt Foelker at 9:26 a.m. Motion carried 4/0.

**Land & Water Conservation Committee  
Minutes  
July 17, 2013**

**1. Call to Order:**

The monthly meeting was called to order by Walt Christensen at 8:30 a.m. Committee members Sarah Bregant, Walt Christensen, Matthew Foelker, Carlton Zentner, and Scott Zimmerman (@ 8:32) were present. Also in attendance were Mark Watkins, Director, Land & Water Conservation Department (LWCD); Kim Liakopoulos, Gerry Kokkonen, LWCD; John Molinaro, County Board Chairman/Supervisor; and Dennis Vollmer, NRCS.

**2. Roll Call (Establish a Quorum):**

A quorum was established.

**3. Certification of Compliance with the Open Meetings Law:**

It was determined that the committee was in compliance with the Open Meetings Law.

**4. Review of the July Agenda:**

The July agenda was reviewed by the committee members.

**5. Review and Approval of the June Meeting Minutes:**

Carlton Zentner made a motion to approve the June meeting minutes as written, Sarah Bregant seconded. Motion carried 4/0.

**6. Communications:**

There were no communications at this time.

**7. Citizen Comments:**

There were no citizen comments.

**8. Natural Resources Conservation Service (NRCS) Report:**

Dennis Vollmer discussed the Natural Resources Conservation Service (NRCS) report. See attached. Caroline Clarin, an Agriculture Engineer with NRCS, has accepted a new position. She will be leaving Jefferson County for a job in the Red River Valley in Minnesota.

**9. Notice of Noncompliance with Soil and Water Conservation Requirements - Farmland Preservation Program (FPP):**

None at this time.

**10. Cancellation of Noncompliance - Farmland Preservation Program (FPP):**

None at this time.

**11. Farmland Preservation Program Update: Mark Watkins**

The Joint Finance Committee moved to amend the budget and change FPP from a tax credit program to a grant program. This amendment was vetoed by Governor Walker. The tax credit will remain the same for the time being.

LWCD has completed Farm Spot Checks for this year and is working on Livestock Spot Checks.

**12.Non-Metallic Mining Policy: Gerry Kokkonen (LWCD)**

See attached. This policy is an administrative procedure for financial assurance for reclamation.

**13.ATCP 51 Livestock Siting Fee Structure: Mark Watkins**

See attached. State law has changed and we have updated our ordinance to reflect those changes (in red). We will be changing the fee structure to coincide with the time spent by LWCD employees working with customers to insure proper compliance. Matthew Foelker made a motion to approve Ordinance No. 2004-27, Scott Zimmerman seconded. Motion carried 5/0.

**14.Status of Cropland at Old Countryside Home Farm:**

Mark Watkins indicated that nothing has changed since the June meeting. John Molinaro said that some of the land could be reclaimed. It would need to be cleared. There hasn't been a decision as to where the new highway building will be however. There will be a Joint Meeting Infrastructure Committee and Highway Committee tonight where they will discuss the Highway Facility. Scott Zimmerman mentioned that without knowing where the building will be, we won't know how broken up the land will be. It may be broken up too much and would be unattractive to potential renters. We could leave it as green space to be used by taxpayers on the bike path. It has been decided by this committee that it would be best wait until the site plan has been approved before making any further plans.

**15.Discussion and Possible Action on Highway Facility:**

See item #14

**16.Transitional Planning for Retiring Employees:**

John Molinaro indicated that the Human Resources Committee is looking into this. They'll be getting a format together to implement cross training. This item will be revisited during the August meeting when we know more.

**17.Monthly Land & Water Conservation Department (LWCD) Financial Report: Mark Watkins**

We're still on track with the budget. The grant reimbursement has been submitted and we should expect to see a payment within the next month.

**18.Set next meeting and possible agenda items:**

It was decided by the members that the next regularly scheduled meeting of the Land & Water Conservation Committee will be held on August 21, 2013 at 8:30 in **Room 112**. Possible agenda items include: Revisiting items 8 - 10 and 16. Carlton Zentner asked Walt Christensen to discuss Town & Country. Walt accepted and it will be added to the August agenda.

**19.Adjournment:**

Motion to adjourn was made by Carlton Zentner and seconded by Sarah Bregant at 9:17 a.m. Motion carried 5/0.

## BR Amon Reclamation Status Report

**Abstract:** In the spring of 2013 BR Amon & Sons Inc. filed for receivership to allow payment of creditors. Prior to this time Financial Assurance bonding had lapsed on the sites known as the Notbohm Pit and the Stark Pit. While the Banker Pit—which houses an asphalt plant facility—is current on all documentation until October, 2013 for the reclamation permit.

### List of active sites and locations:

#### **Banker Pit**

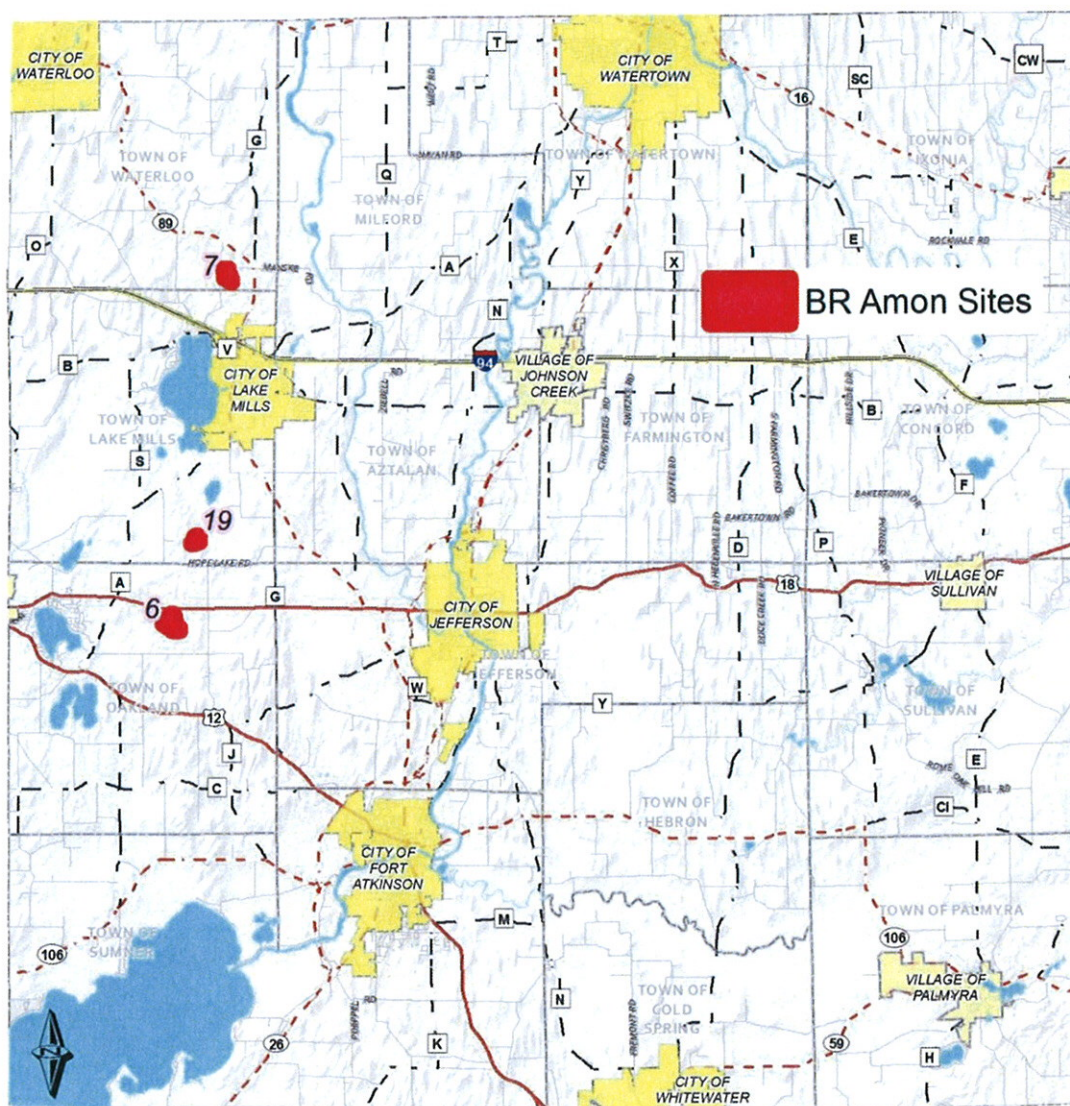
Permit # 55-055-00000-0006  
W 8215 USH 18,  
Cambridge  
Section 10, T06N, R13E

#### **Notbohm Pit**

Permit #55-055-00000-0019  
W8098 HOPE LAKE RD,  
Lake Mills  
Section 35, T07N, R13E

#### **Stark Pit**

Permit # 55-055-00000-0007  
N7430 NORTH SHORE RD,  
Lake Mills  
Section 35, T08N, R13E



# BR Amon Reclamation Status Report

---

## Status as of the end of July, 2013:

**Banker Pit #6-** Onsite inspection with receiver and representative of Hometown Bank, July 24<sup>th</sup>, 2013

- Nearly 35 acres of disturbed areas, for extraction of sand/gravel & washed stone primarily used in asphalt production.
- Several areas of stock piled extracted material. Some portions of pit available for continued production. Very little reclamation with a small area determined as interim.
- Over 8 acres used for shingle processing and asphalt facility.
- Asphalt plant, office and shop remain on site, with a few conveyors and screening plant. Hi-Cap well ID VK191 located East Central portion of pit.
- Potential environmental hazards: Several tanks containing petroleum products on site -none seem to be leaking at this time. Majority of storm water is contained onsite.
- Permit is up-to-date with FA bonding current until October 17, 2013 – sixty day notice sent.

**Notbohm Pit #19-** Onsite inspection and discussion with landowner, April 30, 2013

- Approximately 12 acres disturbed, all acreage shaped. This area was a used primarily for sand extraction in asphalt production.
- Half of the area has topsoil distributed while the remainder requires topsoil placement. Areas of topsoil stockpiles remain, with the entire site requiring a vegetative cover.
- Very little storm water run-off on site, with no environmental or safety hazards present at this time. Scale house remains onsite.
- An additional location of ~10 acres for continued extraction is available in an adjoining parcel.
- Permit revocation: 07/22/2013 due to FA bonding lapse and consultation with Corp Counsel.

**Stark Pit #7-** Onsite inspection, April 30, 2013 and phone conversation with landowner

- Approximately 15 acres disturbed, ~ 3 acres sloped and requiring topsoil, ~ 800 linear feet of 12 foot high wall with at least one safety access. The site provides crushed stone and sand.
- Four large stockpiles of sand, dimension stone, and scale house with gate remain. An additional area of ~ 5 acres could be used for extraction. Nearly 5 acres of southern portion of pit reclaimed since 2006.
- Pit is all internally drained with a potential safety hazard involved with remaining high wall.
- Permit revocation: 07/22/2013 due to FA bonding lapse and consultation with Corp Counsel.



**Jefferson County Board Report  
8/21/2013**

**EQIP practices in progress**

- Brendon is working on over a dozen construction sites currently
  - 2 spring blowout projects will be repaired
- All needed DNR permits have been obtained
- Several payments were completed during the past month

**Conservation Reserve Program (CRP)**

- General CRP sign up occurred from May 20<sup>th</sup> thru June 14
  - This includes Highly Erodible Land
  - 13 contracts were accepted for Jefferson County
    - Will have many contracts ready for LCD to sign on 8/21
      - Remaining contracts will need to be signed by 9/6 and delivered to FSA
- Continuous CRP
  - Field eligibility reviews are complete
    - ~10-11 eligible for contracting
    - Will have many contracts ready for LCD to sign on 8/21
      - Remaining contracts will need to be signed by 9/6 and delivered to FSA

**General**

- Wetland/HEL Determination requests to complete:
  - ~25 have yet to be looked or are being reviewed, but not yet completed
  - 2 are waiting to be digitized
  - 2 are waiting to be approved/signed
- Windows 7 and ArcMap 10 conversion happened on all computers during the week of June 24<sup>th</sup>
  - Still working thru the numerous issues this has caused due to differences
    - Computer issues have slowed the progress of completing CRP contracting
- The past month consisted of: designing practices for 2013 fall construction, summer construction, practice certification and payments, wetland reviews, and CRP signups
  - The next month should consist of: summer/fall construction projects and certification/payment of practices, completing CRP contract writing, PRS (performance results system) goal reporting and 2013 compliance review follow-ups
- Local Working Group meeting will be held 9/12 @ 9:30 in Jefferson NRCS meeting room
- NRCS will be at the Sheep and Wool festival 9/6-9-8
- Dennis Attended an Advanced Grazing Training at the Mike Gehl farm in Hartford on 8/8



Town and Country RC&D has had a busy summer. Here are some headlines that may be of interest to the folks on the Land and Water Conservation Committee--

Our **Vision Team meeting, held Aug 1**, highlighted water quality with guest host Kurt Calkins, Columbia County's Mark Watkins (LWC director). The meeting centered around adaptive management techniques to help municipalities come into compliance with new TMDL requirements on the Rock River. Jun Yoshitani, one of the guest speakers, gave updates from a field pilot project he has going with Milwaukee MSD to explore algae as an alternative to comply with TMDL criteria. As a result of his talk, Jun has been invited to talk with Beloit's and Columbus's wastewater treatment plant superintendents. Jun has been in contact with Fort Atkinson, Jefferson, Johnson Creek and Watertown's wastewater treatment plant operators, as well, who are interested in hearing the results of his pilot project. If convincing, it may be a ray of light on the expensive process of meeting the new standards for our permitted municipalities. Town and Country RC&D continues to help make these connections.

Our next **Vision Team meeting will be Oct 10, in Ozaukee County**, hosted by LWC director Andy Holschbach, and is centered around sustainable land management. We'll be touring Lion's Den Gorge, a natural area, and a farm tour of the Bob Roden farm. He is innovating a way to clean and reuse animal bedding to reduce waste and costs. Everyone from LWC committee invited to attend -- please sign up to get on invitation list to learn more.

We will be **planning 2014's Vision Team** meetings, and have chosen to highlight a facet of sustainability, plus one of our service counties, at each of 4 quarterly meetings. If Jefferson County's LWC would like to host one, please let me know, and we will make the arrangements with you for some time next year. If there is a project that you would like showcased, we'd like to help you do so.

We've partnered with the Environmental Law Institute and Rock River Coalition to put on a 4-part webinar series, which have been attended by over 200 people so far (3 of 4 completed) called **Wetlands, Wildlife Habitat and Floodplain Hazards: A Webinar Series to Promote Collaboration to Restore Wetlands and Floodplains and Mitigate Flood Hazards in the Rock River Basin**. There have been 1 webinar/month; June - Sept on the 3rd Monday of each month. The last one was August 19th and featured Joe Nehmer and Donna Haugom, as well as Roxanne Gray, with a topic of making the most of buy-out land once the buildings are removed. The archive is available at <http://www.eli.org/Program Areas/wetlandswebinars.cfm>. Registration for the final program, on "Wetlands as Problem Solvers" can be found here: <https://www3.gotomeeting.com/register/390141918>.

We are also still co-leading the Water Star Wisconsin program, which has a new series of webinars about to air every other week starting midSeptember. Attached is the promotional material for these **Municipal Water Resource Management webinars**. Since we have last reported, Johnson Creek and Watertown have become Water Star communities. To register for these free case-study and information rich programs follow this link:

We are in the midst of planning a **free one-day workshop** aimed at linking traditionally underserved populations with government farm subsidy, financing and insurance programs through the NRCS, USDA, and Rural Development service. This conference, called the **Income Opportunities in Agriculture: One-on-One Help for Farmers Conference** - is especially being marketed to Wisconsin's Hmong, Latino, Native American and women farmers. I've attached the SAVE THE DATE for this, as well. Travel stipends will be available for any Jefferson County farmers that may wish to take advantage of this conference. Please help us spread the word.



The **Eat Here, Eat Well Coalition** is beginning its 2013-2014 season. This group is aiming to bring more locally sourced, healthy, fresh produce into Jefferson County Schools. Town and Country RC&D is one of three primary partners in the coalition. The project is expanding this year to include Cambridge, Fort Atkinson, Jefferson, Johnson Creek and Watertown school districts. The impacts are threefold: 1) provide nutrition education to school children as one effort to reduce childhood obesity; 2) provide education so that school children have a better sense of local farms, farming, and where food comes from; and 3) opening new institutional markets for local farmers and food producers. We are setting up a website for this effort now; in the meantime, follow our efforts on facebook at [www.facebook.com/EatHereEatWell](http://www.facebook.com/EatHereEatWell)

Town and Country RC&D still has a **full-time grazing technician and a half-time grazing** education specialist on staff, offering free grazing plan help throughout out southeastern Wisconsin, and also education, pasture walks, and networking to help farmers who wish to transition to grazing do so safely and with good information with which to make decisions. Mike Gehl, longtime organic dairy farmer from Washington County, and Kirsten Jurcek, organic farmer from rural Jefferson, lead this program. Learn more about our programs here: <http://www.tacrcd.com/grazing.html>

Our agency continues to help with the creation and distribution of the **Farm Fresh Atlas of Southeastern Wisconsin**. It is not too early for farmers and farm businesses from Jefferson County to consider listing in this premiere marketing directory. These directories were handed out from two different locations at the Jefferson CountyFair in July and were well received. They list every farmers market in our county, as well. Please consider encouraging the farms and farm businesses you work with to consider listing -- at <http://www.farmfreshsewi.org/>

We are involved in **farmland protection** through a popular fundraiser led by Tall Pines Land Conservancy, operating primarily in Waukesha and Washington Counties. Town and Country RC&D partners with TPLC to help run an educational bike ride called Ride to the Barns, which takes bikers on a 30 or 60 mile route from one farm to the next that have opted to put conservation easements on their land. This year 500 riders are expected, an all-time high. Local food is featured throughout the ride, which may attribute to its appeal. Every year since the ride began, ridership has doubled. Please see promotional handout.

One final program that may be of interest to you here at the LWCC, is our **urbanwood program**. This volunteer-led initiative draws attention to the issue of making highest use of trees that must be removed for reasons other than timber harvesting. Ash trees that are being felled due to the emerald ash borer invasion should be seen as a resource, not a waste product. An excellent urbanwood demonstration is being held until Sep 30th at the Delafield Art Center. Special educational programming will be taking place Sept 13 at the gallery, where more than 1000 viewers are expected. Town and Country RC&D will be there talking about sustainable farming practices as well as urbanwood.

### **Financial information**

Town and Country RC&D is paying its bills primarily through subcontracting work with other organizations, membership dues, and grants from private foundations. We are actively seeking grants for our water advocacy and project work, for the work we do with farm to school efforts, for our grazing program, and for our urbanwood programs. We have administrative costs that are around 18%, with all other money going directly to programming. We are led by a ten-person volunteer board. Our staffing remains at 1 full-time project coordinator, 1 full-time grazing technical expert, a half-time grazing education specialist, an intern providing instruction to boaters to control the spread of aquatic invasive species under a grant from the Clean Boats, Clean Waters program, and a contracted accountant.

Thank you for the chance to talk about some of our programs and activities at Town and Country RC&D. Please sign up to receive our newsletter and/or to receive an invitation to our Vision Team meetings.





**water star**  
**WISCONSIN**

guiding, inspiring and recognizing municipalities for exemplary efforts in  
surface water groundwater recreation

Water Star Wisconsin, Town and Country RC&D, Rock River Coalition, UWEX and WDNR present:

# Municipal Water Resource Management Webinar Series - 2013

Six programs conveniently scheduled over your lunch hour from Noon - 1pm

Emphasis on Wisconsin professionals and case studies

Participate from your office computer, using Go-To-Webinar®

No cost. Register at: <https://www1.gotomeeting.com/register/954156265>

Questions: [andrew.yencha@ces.uwex.edu](mailto:andrew.yencha@ces.uwex.edu), 414-256-4631

Visit: <http://www.waterstarwisconsin.org> for details on topics and speakers

Register for the series.  
Attend the sessions you want.



## Sept 11, Noon-1pm, Winter Road Management: Easy on the Salt

*Years of road salt buildup harms the environment, but are we reaching that threshold in WI? What does the data say? Experts from the USGS and Wisconsin's Water Action Volunteer program share findings from a three-year road salt monitoring effort.*

Steve Corsi, Research Hydrologist, US Geological Survey

Kris Stepenuck, Water Action Volunteer Program Coordinator, WDNR/UW-Extension

## Sept 25, Noon-1pm, Public Works Yard Pollution Prevention: Keep it Tidy for Clean Water

*A look at conditions and practices observed by DNR staff at several municipal public works yards, including specific storm water pollution prevention practices your community should consider.*

Pete Wood, Water Resources Engineer, WDNR

## Oct 9, Noon-1pm, Water Conservation: Are you Ready to H2O Score?

*Learn about the award-winning program H2O Score, and how a community used it to motivate municipal water customers to save water. Hear how Kaukauna Utilities' WaterSense program makes a difference.*

McGee Young, Associate Professor, Marquette University

Rick Lien, Water Superintendent, City of Whitewater

J. Kevin Obiala, Water Department Superintendent, City of Kaukauna

## Oct 23, Noon-1pm, Prescription Drugs in Wastewater: How to Get the Meds Out

*Prescription drugs are a growing water quality concern. We'll overview the issue, discuss state level resources and programs, and look at Jefferson County's drug dropoff program, including the role law enforcement played.*

Steve Brachman, Waste Reduction Specialist, UW-Extension

Sharon Ehrhardt, Zoning & Solid Waste/Air Quality Assistant, Jefferson County

Paul Milbrath, Sheriff, Jefferson County

## Nov 6, Noon-1pm, Inflow and Infiltration: Stop the Leaks

*Case studies addressing municipal inflow and infiltration concerns. If leaky pipes are keeping you up at night, this program will show you what options are available.*

Tom Turchi, City Engineer, City of Marshfield

Chris Stamborski, Assistant Director of Municipal Services, R.A. Smith National Inc.

## Nov 20, Noon-1:30pm, Pervious Paving Materials: Why, Where and How

*Hear why Milwaukee County chose pervious material for a 600 stall parking lot, how it was designed, installed, what it cost, and how it has performed. Then learn about the DNR's new technical standard for pervious pavements which specifies requirements needed for NR 151 compliance.*

Kevin Haley, Parks Manager, Milwaukee County

Pete Wood, Water Resources Engineer, Wisconsin DNR

Gini Knight, Standards Oversight Council Coordinator, WI Land & Water Conservation Assoc.



**W**ater Star Wisconsin honors municipalities who do outstanding work providing their residents with safe and abundant drinking water, clean lakes and streams, appropriate recreational opportunities and sustainable land use planning. The program is a joint effort of UW Extension's Regional Natural Resources Program, the Wisconsin DNR, Town and Country RC&D and the Rock River Coalition. Additional sponsors and endorsers are listed on Water Star's web site.

"University of Wisconsin, U.S. Department of Agriculture and Wisconsin counties cooperating. An EEO/AA employer, University of Wisconsin Extension provides equal opportunities in employment and programming, including Title IX and American with Disabilities (ADA) requirements. La Universidad de Wisconsin-Extensión, un empleador con igualdad de oportunidades y acción afirmativa (EEO/AA), proporciona igualdad de oportunidades en empleo y programas, incluyendo los requisitos del Título IX (Title IX) y de la Ley para Americanos con Discapacidades (ADA)."

**UW**  
**Extension**  
Cooperative Extension



**Rock River**  
Coalition

**TOWN & COUNTRY**  
Planning, Construction  
& Development, Inc.



# Tree Order Form

Type of Tree	# of Bundles	Subtotal

Subtotal: \_\_\_\_\_

5.5% Tax: \_\_\_\_\_

Total: \_\_\_\_\_

Name \_\_\_\_\_

Address \_\_\_\_\_

Phone Number \_\_\_\_\_

Make checks payable to Jefferson County  
LWCD

Mail To:

Jefferson County LWCD  
320 S Main St, Room 113  
Jefferson, WI 53538

Trees come in bundles of 25. Payment is due at the time of order. Include this form with payment. All sales are final. No refunds will be given. We are not responsible for viability of trees.

## Please Note:

There are a limited number of trees available. Trees will be reserved with paid and completed order forms on the date in which they are received. So place your order soon!

Minimum order for any one species is 25 trees. All orders must be in multiples of 25 (50, 75, 100, etc).

We are required to collect 5.5% sales tax on all trees sold. Please include this in your calculations. If you are tax exempt, a signed exemption form must be included with the order.

Trees need to be picked up promptly on the pickup dates to help ensure viability of trees. Trees not picked up on pick-up dates will be disposed of and refunds will not be given.



## Jefferson County Land & Water Conservation Department

# 2013/2014 Annual Tree Sale



(920) 674-7110



## Tree Details

### 2-3 Fraser Fir

Often referred to as the Cadillac of Christmas trees. This tree has soft needles, an excellent fragrance and exceptional needle retention. Likes cool, moist well-drained soil. Avoid heavy, wet clay soils. Full to partial sun. Grows to a height of 40 - 60'.

**12"- 16" \$30**

### 2-2 White Pine

Fast growing, large, open tree with long, soft, bluish-green needles. Grows best in moist, well drained, sandy loam soils. Full sun to partial shade. At maturity can reach a height of 70 - 100'.

**7"- 15" \$30**

### 2-2 Colorado Blue Spruce

Densely formed, slow growing tree with stiff, silvery-blue to bluish-green needles. An attractive ornamental and background tree. Thrives in dry well-drained soil and full sun. Grows well over 35' during its long lifespan.

**12"- 16" \$30**

### 2-2 Norway Spruce

Fastest growing spruce with stiff, dark green needles and draping branches. Makes an ideal snow/windbreak. Provides winter cover for wildlife. Does best in full to partial sun with a moist, well-drained, acidic soil but grows well in most conditions. Height 40 - 60'.

**7"- 15" \$30**

### 2-2 White Spruce

Moderate growing tree with bluish-green needles, and short, dense branches. A good ornamental or windbreak tree. Dense winter wildlife cover. Does well in full sun and various soils. Grows to be 40 - 60'.

**7"- 15" \$30**

### Allegheny Serviceberry - 1 Year Seedling

Grows to 25'. Small, upright multi-stemmed tree can be grown as a small tree or large shrub. Soil and moisture type widely adaptable but prefers moist well drained loams. Full sun to partial shade. White flowers followed by edible purplish-blue fruit. Orange-red fall foliage.

**12"- 18" \$30**

### Hazelnut - 2 Year Seedling

Small shrub often in clumps reaching 12' in height. Edible brown nuts. Grows best in moist, well-drained soils but will adapt to most types of soils. Full sun or deep shade. Attracts wildlife such as deer, grouse, turkeys, pheasants and quail.

**12"- 18" \$30**

### Red Oak - 1 Year Seedling

A wide, massive 80 - 90' shade tree. Long-lived, this acorn tree provides food and shelter for wildlife. Good for ornamental plantings, lumber and firewood. Prefers moist, rich, well drained soil and full to partial sun.

**12"- 18" \$30**

### White Birch - 1 Year Seedling

Moderate to fast growth with a mature height up to 70'. Bark doesn't peel as readily as Native White Birch. Birch-borer resistant. Moist, well drained soil and full sun.

**9"- 14" \$30**

Pick up will be mid to late spring  
at the Jefferson County  
Fairgrounds. Postcards will be sent  
to notify customers of pick up  
dates and times.

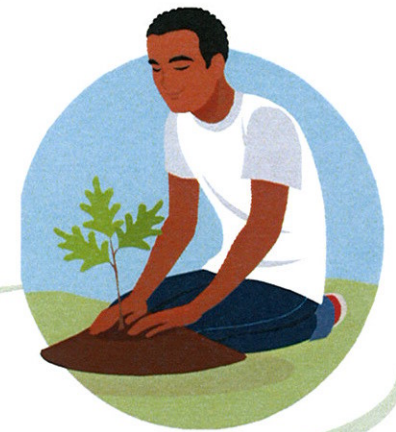
## Tree Information

2-2 or 3 refers to the age of the tree. Each tree spends 2 years in a seedling bed and 2 or 3 years in a transplant bed. This pertains to all of the evergreens. The deciduous trees are seedlings and their ages are indicated.

The measurements are approximate. The size of the trees will vary depending on the weather conditions during the growing season.

Please be sure to plant your trees as soon as possible to help viability. If unable to plant right away, keep trees in a cool, dark place such as a garage floor. Keep roots moist but do not submerge.

Tree spades are available for a small refundable deposit fee.



Jefferson County  
Land & Water Conservation Totals

Date Ran 7/22/2013  
Period 6  
Year 2013

Business Unit	Description	Current Period Actual	Current Period Budget	YTD Actual	YTD Budget	Prorated Variance	Total Budget	Annual Remaining	Percentage Of Budget
7001 Land & Water	Revenue	(146.20)	(15,754.17)	(19,674.11)	(94,525.00)	74,850.89	(189,050.00)	(169,375.89)	10.41%
	Expenditures	38,968.61	41,896.21	247,871.94	251,377.27	(3,505.33)	502,754.54	254,882.60	49.30%
	Other Sources	-	-	-	-	-	-	-	#DIV/0!
	Total	38,822.41	26,142.05	228,197.83	156,852.27	71,345.56	313,704.54	85,506.71	72.74%
7002 Wild Life Crop	Revenue	1,554.94	(1,666.67)	(2,652.02)	(10,000.00)	7,347.98	(20,000.00)	(17,347.98)	13.26%
	Expenditures	-	1,666.67	2,652.02	10,000.00	(7,347.98)	20,000.00	17,347.98	13.26%
	Other Sources	-	-	-	-	-	-	-	#DIV/0!
	Total	1,554.94	-	-	-	-	-	-	#DIV/0!
7008 County Cost Share	Revenue	-	-	-	-	-	-	-	#DIV/0!
	Expenditures	-	372.75	-	2,236.50	(2,236.50)	4,473.00	4,473.00	0.00%
	Other Sources	-	-	-	-	-	-	-	#DIV/0!
	Total	-	372.75	-	2,236.50	(2,236.50)	4,473.00	4,473.00	0.00%
7009 Hope Lake	Revenue	(1,737.14)	(250.00)	(1,737.14)	(1,500.00)	(237.14)	(3,000.00)	(1,262.86)	57.90%
	Expenditures	-	-	-	-	-	-	-	#DIV/0!
	Other Sources	-	-	-	-	-	-	-	#DIV/0!
	Total	(1,737.14)	(250.00)	(1,737.14)	(1,500.00)	(237.14)	(3,000.00)	(1,262.86)	57.90%
7010 Resources	Revenue	-	(1,958.33)	(15,893.50)	(11,750.00)	(4,143.50)	(23,500.00)	(7,606.50)	67.63%
	Expenditures	7,851.20	1,958.33	23,878.70	11,750.00	12,128.70	23,500.00	(378.70)	101.61%
	Other Sources	-	-	-	-	-	-	-	#DIV/0!
	Total	7,851.20	(0.00)	7,985.20	-	7,985.20	-	(7,985.20)	#DIV/0!
7011 Non Metallic	Revenue	-	(1,330.83)	-	(7,985.00)	7,985.00	(15,970.00)	(15,970.00)	0.00%
	Expenditures	-	52.08	28.48	312.50	(284.02)	625.00	596.52	4.56%
	Other Sources	-	-	-	-	-	-	-	#DIV/0!
	Total	-	(1,278.75)	28.48	(7,672.50)	7,700.98	(15,345.00)	(15,373.48)	-0.19%
7012 Mud Lake	Revenue	1,737.14	-	-	-	-	-	-	#DIV/0!
	Expenditures	-	-	-	-	-	-	-	#DIV/0!
	Other Sources	-	-	-	-	-	-	-	#DIV/0!
	Total	1,737.14	-	-	-	-	-	-	#DIV/0!
7013 Rome Ponds	Revenue	-	-	-	-	-	-	-	#DIV/0!
	Expenditures	-	-	-	-	-	-	-	#DIV/0!
	Other Sources	-	-	-	-	-	-	-	#DIV/0!
	Total	-	-	-	-	-	-	-	#DIV/0!
7014 Gypsy Moth Program	Revenue	-	-	-	-	-	-	-	#DIV/0!
	Expenditures	-	-	-	-	-	-	-	#DIV/0!
	Other Sources	-	-	-	-	-	-	-	#DIV/0!
	Total	-	-	-	-	-	-	-	#DIV/0!
7016 Southern Area	Revenue	-	-	-	-	-	-	-	#DIV/0!
	Expenditures	-	-	-	-	-	-	-	#DIV/0!
	Other Sources	-	-	-	-	-	-	-	#DIV/0!
	Total	-	-	-	-	-	-	-	#DIV/0!
7020 County Farm	Revenue	-	(7,725.83)	(46,101.00)	(46,355.00)	254.00	(92,710.00)	(46,609.00)	49.73%
	Expenditures	109.71	321.50	315.33	1,929.00	(1,613.67)	3,858.00	3,542.67	8.17%
	Other Sources	-	-	-	-	-	-	-	#DIV/0!
	Total	109.71	(7,404.33)	(45,785.67)	(44,426.00)	(1,359.67)	(88,852.00)	(43,066.33)	51.53%
Total All Business Units	Revenue	(328.40)	(28,685.83)	(86,057.77)	(172,115.00)	86,057.23	(344,230.00)	(258,172.23)	25.00%
	Expenditures	46,929.52	46,267.55	274,746.47	277,605.27	(2,858.80)	555,210.54	280,464.07	49.49%
	Other Sources	-	-	-	-	-	-	-	#DIV/0!
	Grand Tot Land Conservation	46,601.12	17,581.71	188,688.70	105,490.27	83,198.43	210,980.54	22,291.84	89.43%